

COMPLETE FLOORING SYSTEMS

CFS provides complete flooring solutions and is a proven leader in the planning and installation of high-performance industrial flooring, coating, and lining systems designed to provide superior chemical, impact, and abrasion resistance. We also provide a customized solution for your most challenging projects with a variety of traditional flooring systems installations to include carpet, wood and tile, rubber flooring, LVT, VCT, and sealed concrete.

RESINOUS FLOORING

Poured resinous floors can be decorative and highly durable -- and excellent choice for a variety of uses. The most common types of resinous flooring are epoxy, polyurethane, and acrylic, all two-part systems consisting of a resin and a hardener material. Our team is Dur-A-Flex trained and certified.

Benefits:

- Chemical Resistant
- Customizable
- Seamless Surface (hygienic, less maintenance, and easy to use in tight spaces)
- Slip Resistance
- Extremely Durable

POLISHED CONCRETE FLOORING

An attractive alternative for commercial flooring is polished concrete. Most modern buildings are built on a concrete floor slab; polishing the exposed concrete eliminates the energy and material consumed by applying a floor covering.

Benefits:

- Cost-Efficient
- Resistant to High Wear
- Less Maintenance
- Long Service Life
- Resistant to Moisture
- High Light Reflectivity
- Sustainable



Epoxy/resinous flooring options are great for schools, hospitals, and other applications.



Polished and/or stained concrete flooring options are great for industrial, schools, and food service applications.

CONVENTIONAL FLOORING

CFS also provides conventional flooring solutions for office, retail, industrial, and medical facilities. Examples of our finished work is presented below.



Porcelain Tile



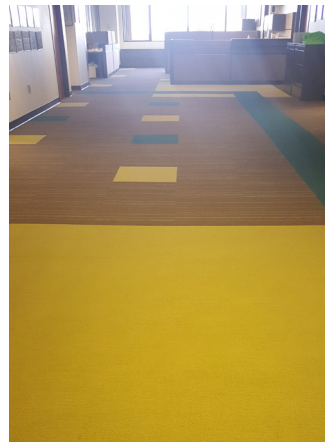
Luxury Vinyl Tile



Rubber Flooring



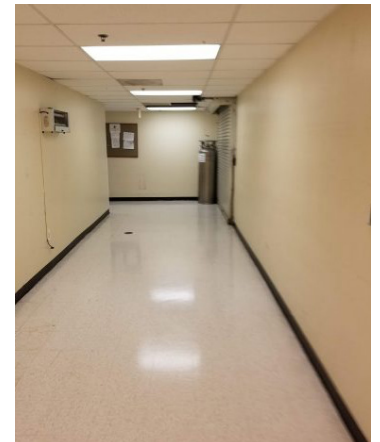
Sealed Concrete



Carpet



Wood



Vinyl Composition Tile

Contact Us

To learn more about how we can help you on your next flooring project, call **Patrick Walker**, 404.355.9137, or email pwalker@cfsserv.com.

Visit www.cfsserv.com